



heritage open days

PULBOROUGH

HERITAGE WEEKEND

11 & 12 SEPTEMBER 2021



FREE

Entrance to all

**FREE Parking - Station &
Lower Street Car Parks**

FREE

Heritage Bus Rides

**FREE - this Brochure
gives details of all venues
& activities for you
and your family**

www.heritageopendays.org.uk

 [@heritageopenday](https://twitter.com/heritageopenday)

#HODs

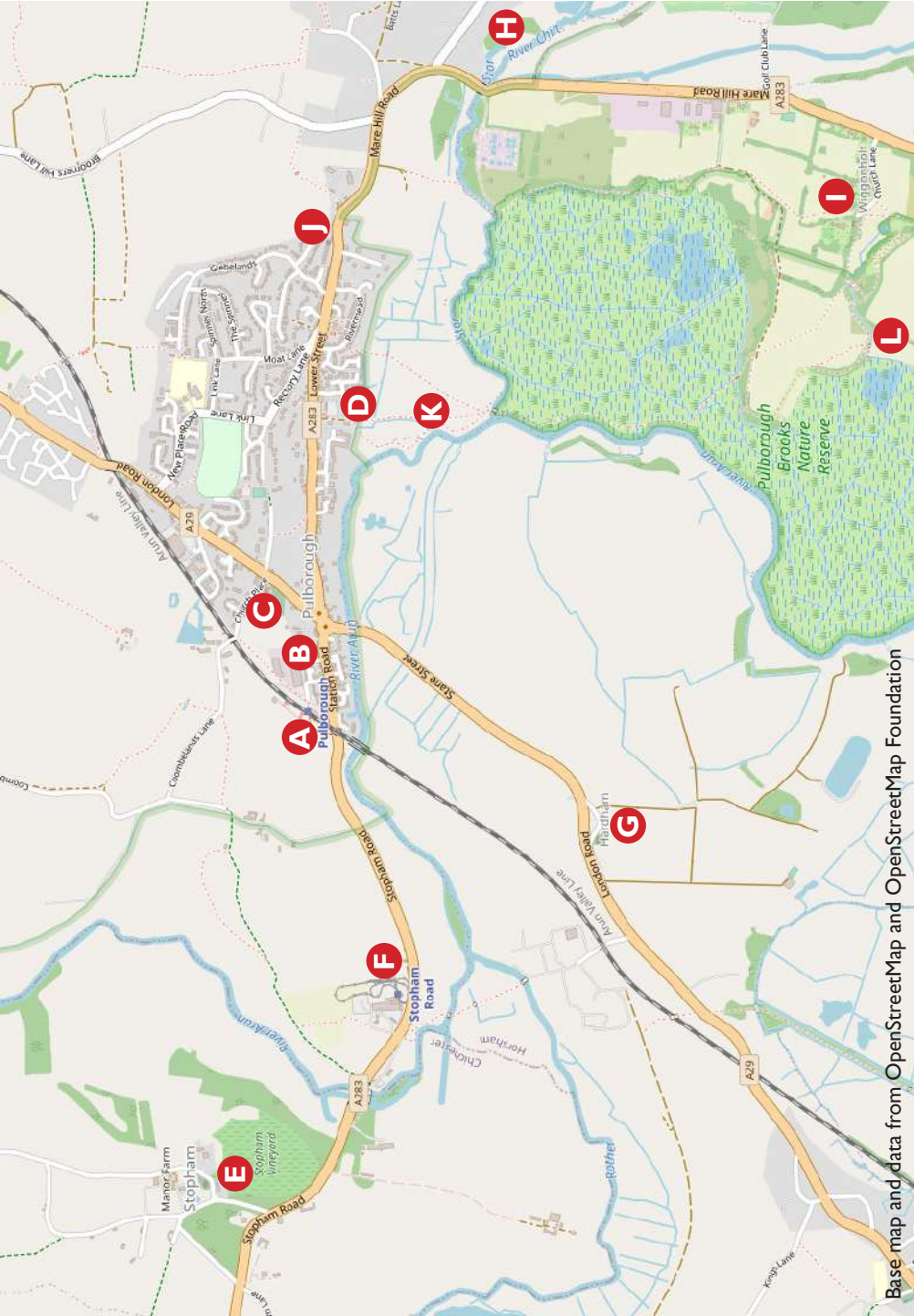
 [/heritageopendays](https://facebook.com/heritageopendays)

 [@heritageopendays](https://instagram.com/heritageopendays)



In partnership with





Base map and data from OpenStreetMap and OpenStreetMap Foundation

PULBOROUGH HERITAGE WEEKEND

‘Heritage Open Days’ is an annual event sponsored by the National Trust. It includes all types of ‘heritage assets’ with the object of opening venues and activities not usually open or for which there is normally an entrance fee. The Weekend is arranged by The Pulborough Society and the Pulborough Community Partnership.

LIST OF LOCATIONS AND ACTIVITIES

A	Pulborough Railway Station, Station Approach	Page 4
B	Pulborough Masonic Hall, Station Road	Page 5
C	St. Mary’s Church, Church Place	Page 5
D	Model Railway, Pulborough Village Hall, Swan View	Page 6
E	*Stopham Vineyard, Stopham (near the Church)	Page 7
F	South Downs Light Railway (Pulborough Garden Centre)	Page 8
G	St. Botolph’s Church, Church Lane, Hardham	Page 10
H	*Nutbourne Vineyard, Gay Street Lane, Nutbourne	Page 14
I	Wiggonholt Church, Wiggonholt Lane	Page 13
J	United Reformed Church, Lower Street	Page 11
K	Pulborough Wild Art Trail	Page 12
L	RSPB Nature Reserve, Wiggonholt Common	Page 13
	‘Heritage’ bus rides on two vintage buses	Page 18
	Heritage Weekend Food in Pulborough	Page 16

*Vineyards open on Saturday 11th only

Further information on two websites

www.pulboroughsociety.org www.heritageopendays.org.uk

THE HERITAGE WEEKEND IS KINDLY SPONSORED BY

LMC Auto Services

Unit 7&8 | Station Approach Industrial Estate
Pulborough | West Sussex | RH20 1AQ

 01798 873281  lmcautoservices.co.uk



PULBOROUGH RAILWAY STATION

The Station and the Signal Box are two of the older 'Listed' buildings in the village. The coming of the railway in 1859 had a dramatic effect on Pulborough and its neighbouring area. Learn more about the Station, its buildings, its goods yard and the branch line to Petworth and Midhurst. Parts of the Station history are not apparent unless pointed out.

Guided tours 13.30 - 1600. FREE parking on both days.

In the Village Hall (see page 6) you can see a large working model of the Station as it was over 100 years ago.



Hennings Wine Merchants since 1960



Supplying wines from around the world for three generations.

Pulborough | henningswine.co.uk | Petworth

ST. MARY'S CHURCH – Church Place

Pulborough's Parish Church dates back almost 800 years and contains many areas of interest and history. Various activities for children (and adults!) are available this weekend; also light refreshments.

Guided tours from 11.00am (12.30pm on Sunday 12th)

Parking at Tesco or the Station (follow the Wild Art Trail)



PULBOROUGH MASONIC HALL – Station Road

Established in 1933 this building is home to six Masonic Lodges. The Heritage Weekend offers a unique opportunity to see inside the building and learn something of the history and activities of Freemasonry

Guided tours 11.00 - 16.00



PULBOROUGH STATION MODEL RAILWAY

Village Hall, Swan View

We are grateful to the Scalefour Society for the display of this large working railway layout of Pulborough Station as it was circa 1910.

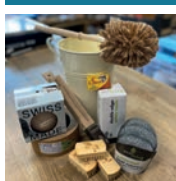
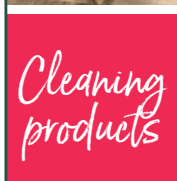
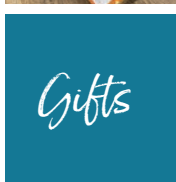
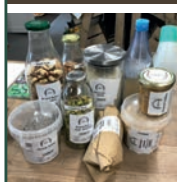
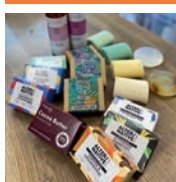
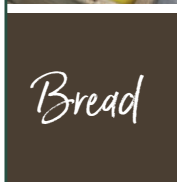
The fine detail gives a vivid impression of the station and its immediate surroundings; it took about 10 years to complete and almost all elements have been hand-made.

Other heritage displays also in the hall, where you can enjoy café-style refreshments, provided by Little Bean Café, and the view over the Brooks from the patio.

11.00 - 16.00



Have you discovered
The Greenhouse?



Find us at
Stane Street Nurseries, Stane
Street, Pulborough RH20 1BQ
Call us 01798 874445
Email us info@thegreenhouse.shop
thegreenhouse.shop



STOPHAM VINEYARD & WINERY

Signposted off the A283 in Stopham



About one mile West of Pulborough this Vineyard was first planted in 2007 and is situated on a South-facing slope of sandy soil. Three styles of still white wine and one sparkling wine are produced. Visitors can view the Vineyard on a self-guided basis and FREE tastings of the wine varieties will be offered in the Winery.

NOTE:

Open Saturday 11th September
only. 11.00 - 16.00



CHARLTON IRONWORK

Gates & Railings
Wrought Ironwork

- Handrails
- Balustrades
- Rose Arches
- Pergolas
- Curtain Poles
- House Signs
- Weather Vanes etc
- Gate Automation
- Blacksmithing
- Repairs
- Free Estimates
- Delivery & Fitting

North Heath Farm
Gay Street Lane
Pulborough
RH20 2HW

01798 875474 • 07790 583201



We are a **friendly village flower shop**, with access to the **very best flowers** and a team of **talented florists** with a **fresh and natural, country style**

*Also gift ware, candles
& objects d'art*

Call 01798 875 488
56 Lower Street
Pulborough
RH20 2BW

SOUTHDOWNS LIGHT RAILWAY

At Pulborough Garden Centre, Stopham Road (A283)

This passenger-carrying light railway is celebrating its 21st year in the Garden Centre. It offers a journey through the Centre in open and covered passenger carriages. The small mainly steam-powered locomotives create a real 'steam experience'.



Visit and inspect the locomotives free or pay for one of the 1-mile trips.

Adults £2

Children £1

11.00 - 15.30
both days

The Pulborough Exchange

Why buy new when you can buy better?

Lightly used household goods at The Pulborough Exchange:

Furniture

Decorative Items

Art

**Cooking, Baking
Dishes & Utensils**

Antiques

China & Glassware

Tools

Table Linens

Children's Toys & Books

**www.thepulboroughexchange.co.uk
01798 873752 @pulborough.exchange**



Comyn and James are delighted to support Pulborough's Heritage Open Day.

Independent local agents bringing **local, national and international** buyers to your property

comynandjames.co.uk 01798 888111



West Sussex and London Associated Office

ST. BOTOLPH'S CHURCH - HARDHAM

Just off the A29 about a mile South of Pulborough, this Grade I Listed church dates from the 11th Century and houses the earliest nearly complete series of wall paintings in England. Among 40 individual subjects is the earliest known representation of St. George.

Guided tours 11.00 - 16.00

Limited parking: special bus trip at 15.30 – see page 18



PROFESSIONAL SERVICES

We can amend your canine troubles with **1-2-1 training or behavioural sessions** with a qualified member of our team.

A variety of **dog-training classes** are also available including: **Puppy-Training, Life-Skills, Further-Training and Dog-Club.**

We can even provide you with peace of mind when you need to leave your dog home alone with our **dog-walking and drop-in services.**

INSURED/QUALIFIED/FIRST-AID TRAINED



Find us on Facebook or at:
WWW.BONECANIS.COM
Or call at: 07909 642897

PULBOROUGH UNITED REFORMED CHURCH

Lower Street

In 1845 a dissenting Minister was given permission to open a place of worship at Mare Hill which was to be called 'The Providence Chapel' (now a private residence next to 'The White Horse'). Then in 1860 the chapel came under the umbrella of the 'Congregational Union'.

In 1947 the church moved from Mare Hill to the present site in Lower Street.

The United Reformed Church was formed in 1972 from an amalgamation of the Congregational Church and the Presbyterian Church of England.

There will be an exhibition of photos, pictures and memorabilia in the recently refurbished building.

Saturday 11.00-16.00: Sunday 14.00-16.00



Willmer's

of Pulborough
Your local electrical retailer

Willmer's of Pulborough is a family-owned business established in 1876 by the present owner's grandfather developing after World War II into an electrical and television business. Willmer's remain a family run electrical retail business providing a friendly professional service with expert advice to help in the selection of your new appliances.



 **euronics**
Superstore prices with
great local service

We continue to have fresh ideas and the new Beko CFP3691VW 60cm Harvest Fresh Fridge Freezer cleverly mimics the natural 24-hour sun cycle to preserve vitamins in your fruit and veg for longer.

64 Lower Street
Pulborough RH20 2BW
01798 872866
www.willmers.com

PULBOROUGH WILDART TRAIL

From the Station to RSPB Pulborough Brooks

This walking route is a new part of Pulborough's 'heritage' but is right up-to-date in using phone-based guidance and commentary from a virtual reality 'Giant'. The App for Apple and Android smartphones should be downloaded in advance as it takes about 5 minutes.

The full trail starts at the Station but you can also join it down Barnhouse Lane off Lower Street (village car park); alternatively start from the RSPB. Look for the 'Wild Art' metal sculptures and images along the way; the 'talons' at the RSPB end are particularly impressive.

FREE RSPB pin badge for children completing the trail.



HEPWORTH

CRAFT BEER AT ITS BEST



Visit our brewery shop for great local beers, wines, ciders and other Sussex produce.

Drive thru and home delivery available.

www.hepworthbrewery.co.uk

PULBOROUGH BROOKS NATURE RESERVE

1.5 miles South-East of Pulborough on the A283

This is one of the nationwide RSPB Reserves and covers 256 hectares of lowland wet grassland. Visitors can enjoy the woodland trails of Wiggonholt Common and the Visitor Centre. (10.00 - 16.00)

Entrance to the Birdwatching Trail costs £7 Adults and £3.50 Children. FREE entry to the children's play area and views over the Reserve from the café area.



WIGGONHOLT CHURCH

Wiggonholt Lane

This tiny church dates from the 12th Century and is usually known as the Shepherds' Church. There is now no village, just a farm and a modern house that replaced the Rectory.

The largely 19C interior includes boards with the Ten Commandments, Creed and Lord's Prayer on both East and West walls. There is still no electricity so lighting for services is by oil lamps and candles.

11.00 - 16.00



Short walk from the RSPB Reserve

NUTBOURNE VINEYARD

Gay Street Lane

East of the village in the hamlet of the same name, this family-run Vineyard has been producing white wines for over 30 years. Follow the free self-guided Vineyard trail with a leaflet describing the various aspects of interest.



Wine sales and expert-led tours with tastings may also be available at a cost of £20. Best access is by car with parking available at the vineyard. Also walking route from Nutbourne.

NOTE:

Open Saturday 11th
September only 11.00 - 17.00

Jacob's Bagels



We bake and deliver traditional hand rolled water bagels across West Sussex.

Please visit our website for selection and prices.

www.jacobsbagels.com

Get 20% off your first order by using coupon code: Heritage

or Call 07920 488 450



Your Local Health Food Shop
for

- Vitamins and Supplements
- Organic Wholefoods
- Refill system for: hair care, body wash, hand wash, body lotions
- Organic and Natural Foods
- Nutritional and Herbal Remedies

Beneficial Health

48 Lower Street, Pulborough,
West Sussex RH20 2BW
Tel: 01798 874433

Email: sales@beneficialhealth.co.uk



Breakfasts

*Freshly
made all
day*

Great Coffee

Lunches

*Paninis, soups, salads,
toasties, jackets, daily
specials...& loads more*

Afternoon teas...

*delicious cakes, biscuits and
sweet treats ...*

46 Lower Street, Pulborough

01798 875 890



St Mary's CofE (Aided) Primary School

Link Lane, Pulborough, West Sussex, RH20 2AN.

Tel : 01798 872007 www.st-marys-pulborough.w-sussex.sch.uk



'A Christ-centred school, with a child-centred curriculum'

St Mary's is a vibrant village primary school with on-site Forest Schools, swimming pool and wildlife area, outstanding Early Years provision and fully equipped classrooms to engage the learning of all children



PULBOROUGH HERITAGE WEEKEND FOOD

THE WHITE HART

Stopham Bridge, Stopham Road RH20 IDS Tel: 01798 874903

Sat: 11:00 – 22:00, Sun: 11:00 – 18:00

THE GARDENER'S RETREAT at PULBOROUGH GARDEN CENTRE

Stopham Road RH20 IDS Tel: 01798 872981

Sat: 09:00 – 17:30, Sun: 10:00 – 16:30

SAM'S STATION FISH FRYER

Station Road RH20 IAH Tel: 01798 875353

Sat: 12:00 – 14:00 & 17:00 – 20:30

Sun: Closed

PAPA PIZZA & GRILL

Station Road RH20 IAH Tel: 01798 872121 or 07450 535818

Sat: 16:00 – 22:00, Sun: 16:00 – 22:00

LEE'S GARDEN

Station Road RH20 IAH Tel: 01798 872467

Sat: 17:00 – 22:00, Sun: 17:00 – 21:00

RIVER MOON

19 Swan Corner RH20 IRJ Tel: 01798 874141

Sat & Sun: 17:00 – 22:30

THE CORNSTORE EMPORIUM

Swan Bridge, RH20 2BJ Tel: 01798 875067

Sat: 09:30 – 16:30, Sun: 10:30 – 16:30

THE LANTERN

3 Lower Street RH20 2BH

Sat: 12:00 – 23:30, Sun: 12:00 – 22:30

DOMINOS

18 Lower Street RH20 2BL Tel: 01798 879218

Sat: 11:00 – 23:00, Sun: 11:00 – 22:30

THE LITTLE BEAN

46 Lower Street RH20 2BW Tel: 01798 875890

ALSO AT THE VILLAGE HALL THIS WEEKEND

Sat: 09:00 – 16:30, Sun: 11:00 – 16:00

THE WHITE HORSE

Mare Hill RH20 2DY Tel: 01798 872189

Sat: 11:00 – 23:00, Sun: 12:00 – 23:00

RSPB PULBOROUGH BROOKS

Wiggonholt RH20 2EL Tel: 01798 875851

Sat & Sun: 10:00 – 16:00

Take away only at going to press

THE RISING SUN

The Street, Nutbourne RH20 2HE Tel: 01798 812191

Sat: 11:00 – 15:00 & 18:00 – 23:30

Sun: 12:00 – 18:00

SO INDIA

3 Stane Street RH20 1BG Tel: 01798 873318

Sat & Sun: 12:00 – 14:00

& 17:00 – 23:00

LOCAL, INDEPENDENT GARAGE FOR ALL YOUR VEHICLE NEEDS



Car and motorcycle
MOT test station

Computer Diagnostics

MOT Repairs

Tyres

Tuning

Mechanical Repairs

Servicing

Welding

Exhausts

*5% donation goes to The Mary How Trust

SAVE
26%

Usual price £54.85*

MOT
Special offer

£40

if booked online

All makes
and all models
undertaken

**FREE collection
& delivery**

Checkatrade.com



blackcircles.com
the new way to new tyres



the Good Garage Scheme

LMC Auto Services

Unit 7&8 | Station Approach Industrial Estate
Pulborough | West Sussex | RH20 1AQ

01798 873281

lmcautoservices.co.uk



LMC
AUTO SERVICES

HERITAGE BUSES

You can ride on a 'heritage' bus or coach as we will have two buses providing connections between the various Weekend locations as below.

1953 London Country RF600



TIMETABLE/ROUTES

Pulborough Station	dep	11.00	11.30	
Oddfellows Arms (for Village Hall)		11.04	11.34	Then at same times
United Reformed Church		11.06	11.36	each hour until
RSPB Reserve (+ Wild Art Trail)	arr	11.12	11.42	15.30 (last trip)
RSPB Reserve	dep	11.15	11.45	on both days
United Reformed church		11.20	11.50	
Oddfellows Arms		11.22	11.52	
Pulborough Station	arr	11.26	11.56	
<hr/>				
Pulborough Station	dep	11.00	11.30	
Garden Centre (for SDLR)		11.03	11.33	Then at same times
Stopham Vineyard *Sat only	arr	11.09	11.39	each hour until
Stopham Vineyard *Sat only	dep	11.15	11.45	15.00 (last trip)
Garden Centre		11.19	11.49	on both days
Pulborough Station	arr	11.23	11.53	
Sunday service to Garden Centre only – same times				
St. Botolph's Church, Hardham – special bus trip at 15.30 from the Station on both days				
A 'collection only' service will operate on both routes after 16.00; (to bring back those on the last outward trips from Vineyard/SDLR and RSPB).				

SPONSORED BY COMYN & JAMES

THE PULBOROUGH SOCIETY

The society is a Registered Charity established in 1973 as a civic amenity society. Eight meetings per year are normally held in the Village Hall with subjects of local and general interest. These are advertised in a Newsletter sent to members. Comments are also submitted to Horsham District Council on local planning matters.

Membership is open to all local residents at a cost of £8 p.a.

Email enquiries to chair@pulboroughsociety.org and the website is at www.pulboroughsociety.org.uk

PULBOROUGH COMMUNITY PARTNERSHIP

The Partnership is a not-for-profit limited company run by local volunteers to help achieve a better quality of life for residents. There are no offices or paid staff as all are volunteers working from home.

The Partnership works closely with, but is separate from, the Pulborough Parish Council. The latter is a statutory body that has things it must do and things it cannot do whereas the Partnership can do anything that fulfils the wishes of the community. This flexibility allows the Village to benefit by drawing resources from wherever possible.

THANKS TO OUR SPONSORS AND ADVERTISERS

This Heritage Weekend would not have been possible without the financial support of our Sponsors – LMC Auto Services, Comyn & James, Horsham District Council, Sussex Police, Pulborough Community Partnership - and all the other local businesses that have taken spaces in this booklet.

COVID-19 CONSIDERATIONS

These events will run in line with local & national guidelines at the time of the Weekend. However, masks will be required in certain locations.

All information correct at time of going to press but the organisers cannot be held liable for any issue arising from unforeseen circumstances.

